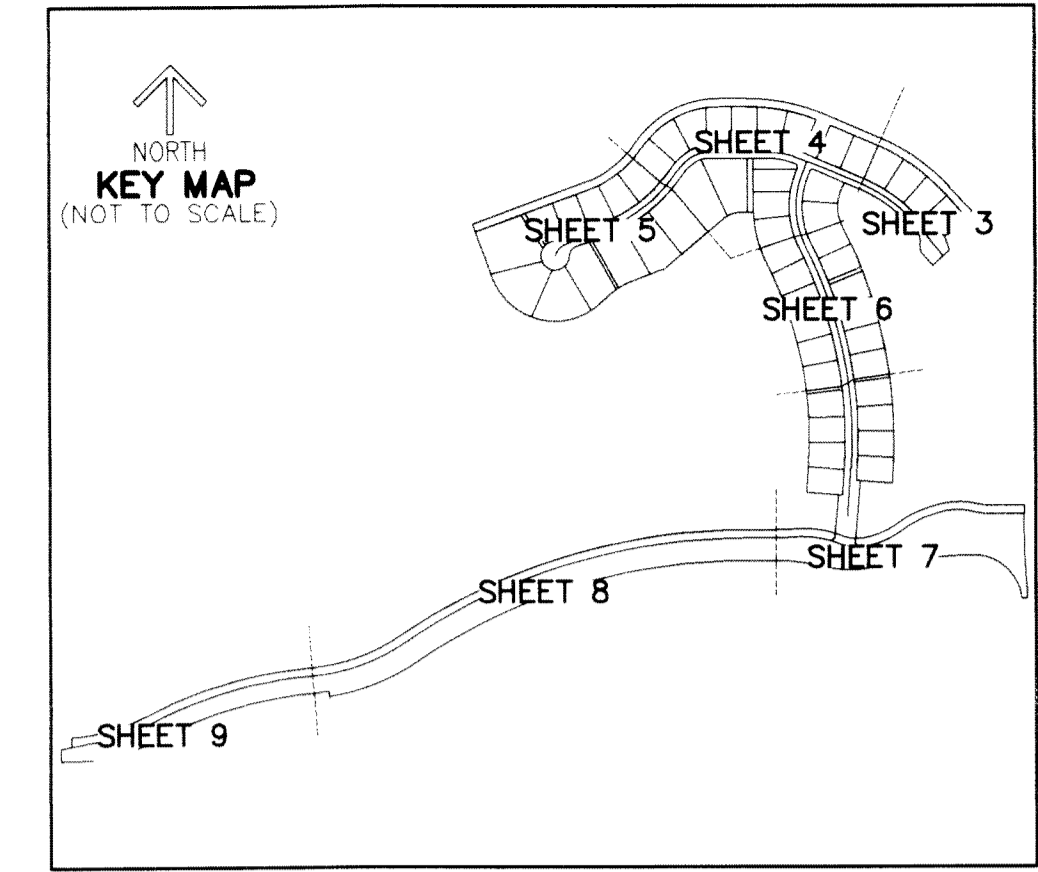


THIS INSTRUMENT PREPARED BY
RONNIE L. FURNISS
OF
CAULFIELD and WHEELER, INC.
SURVEYORS - ENGINEERS - PLANNERS
7900 GLADES ROAD, SUITE 100
BOCA RATON, FLORIDA 33434 - (561)392-1991
CERTIFICATE OF AUTHORIZATION NO. LB3591
AUGUST 2022

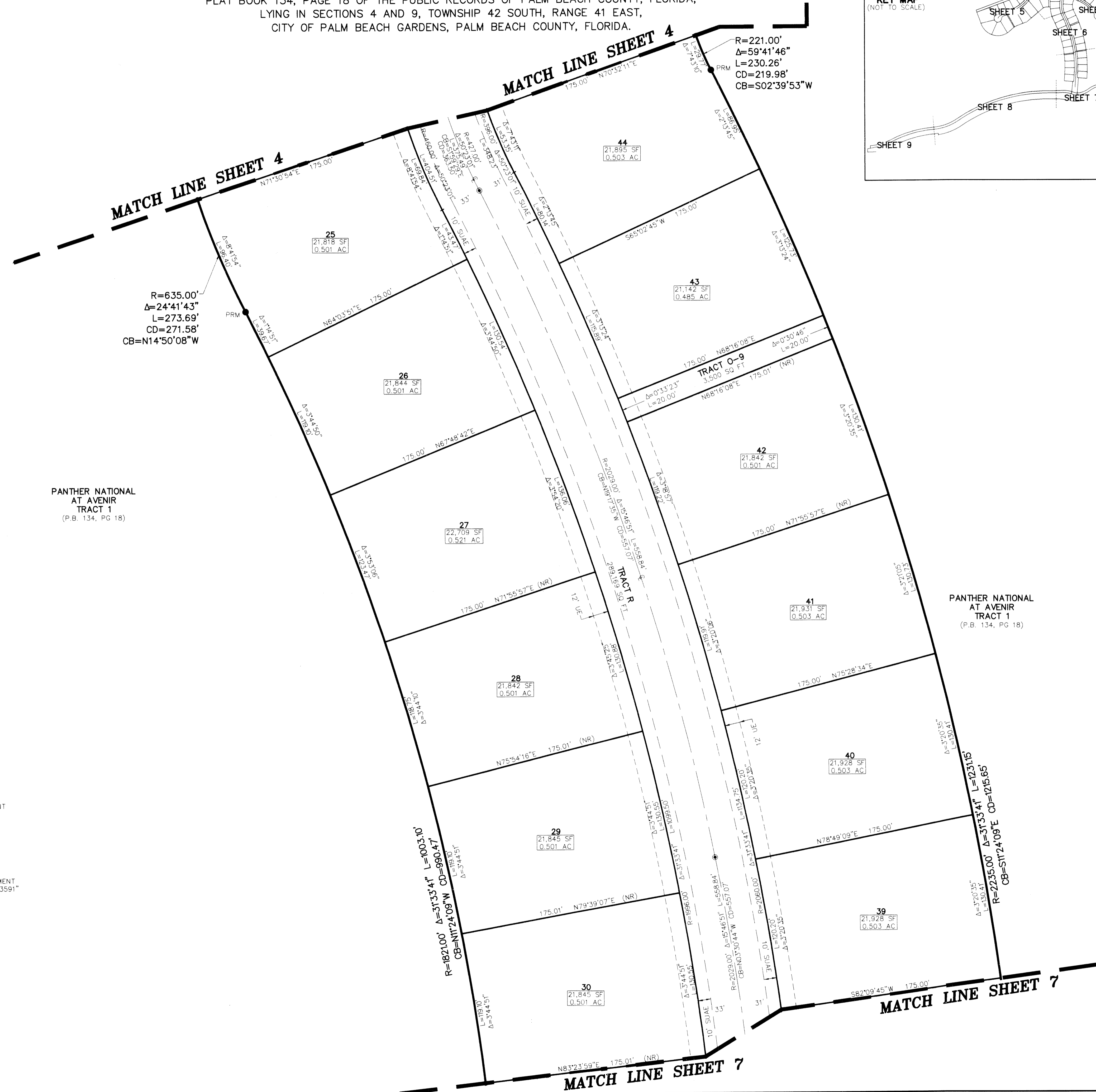
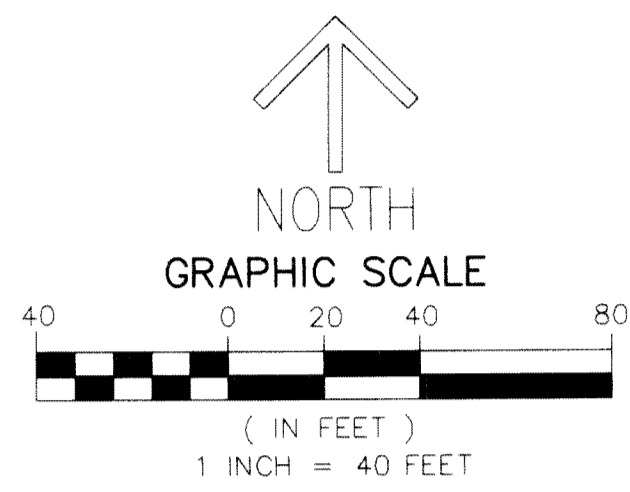
PANTHER NATIONAL AT AVENIR POD 14

A REPLAT OF A PORTION OF TRACT 1 TOGETHER WITH ALL OF TRACT RBE1,
PANTHER NATIONAL AT AVENIR, AS RECORDED IN
PLAT BOOK 134, PAGE 18 OF THE PUBLIC RECORDS OF PALM BEACH COUNTY, FLORIDA,
LYING IN SECTIONS 4 AND 9, TOWNSHIP 42 SOUTH, RANGE 41 EAST,
CITY OF PALM BEACH GARDENS, PALM BEACH COUNTY, FLORIDA.



106

SHEET 6 OF 9



PANTHER NATIONAL
AT AVENIR
TRACT 1
(P.B. 134, PG 18)

PANTHER NATIONAL
AT AVENIR
TRACT 1
(P.B. 134, PG 18)

LEGEND/ABBREVIATIONS

- CL - CENTERLINE
- Δ - DELTA (CENTRAL ANGLE)
- AC - ACRES
- CB - CHORD BEARING
- CD - CHORD DISTANCE
- DE - DRAINAGE EASEMENT
- FSE - FIRE SAFETY ACCESS EASEMENT
- L - ARC LENGTH
- LMAE - LAKE MAINTENANCE ACCESS EASEMENT
- LAE - LIMITED ACCESS EASEMENT
- LB - LICENSED BUSINESS
- LBE - LANDSCAPE BUFFER EASEMENT
- LSE - LIFT STATION EASEMENT
- O.R.B. - OFFICIAL RECORD BOOK
- P.B. - PLAT BOOK
- R - RADIUS
- PG./PGS. - PAGE/PAGES
- O-1 - OPEN SPACE TRACT 1
- (NR) - INDICATES NON RADIAL LINE
- RBE - ROADWAY BUFFER EASEMENT
- SF - SQUARE FEET
- UE - UTILITY EASEMENT
- SUAE - SEACOAST UTILITY AUTHORITY EASEMENT
- 8-42-41 - SECTION 8, TOWNSHIP 42 SOUTH, RANGE 41 EAST
- P.P.A.E. - PERPETUAL PUBLIC ACCESS EASEMENT
- PC - POINT OF CURVATURE
- PT - POINT OF TANGENCY
- PNT - POINT OF NON-TANGENCY
- PRC - POINT OF REVERSE CURVATURE
- CDD - COMMUNITY DEVELOPMENT DISTRICT
- PBC - PALM BEACH COUNTY
- PCP - SET PERMANENT CONTROL POINT NAIL AND DISK STAMPED "C&W LB 3591"
- PRM - SET PERMANENT REFERENCE MONUMENT SET 5/8" IRON ROD WITH CAP STAMPED "C&W LB 3591"
- PRM - FOUND PERMANENT REFERENCE MONUMENT 4" x 4" x 24" CONCRETE MONUMENT WITH DISK STAMPED "PRM LB 3591"
- ✱ - 1/4 SECTION CORNER
- ✱ - SECTION CORNER